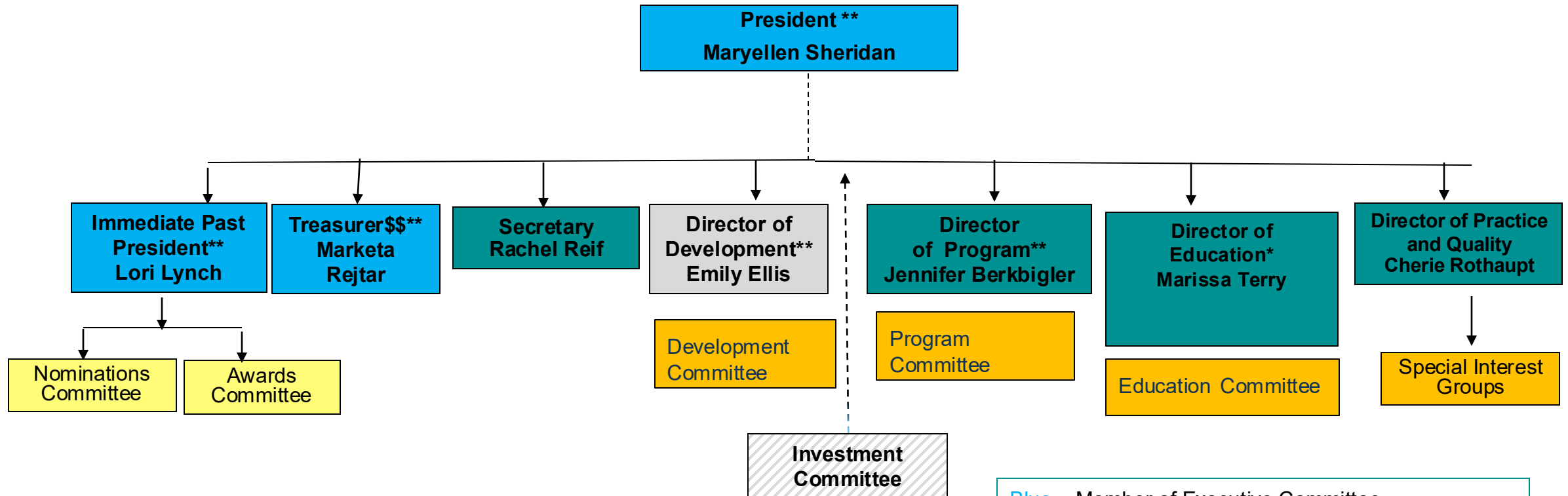


AMERICAN PEDIATRIC SURGICAL NURSES ASSOCIATION, Inc. (APSNA)

ORGANIZATIONAL CHART 2025-2026



Blue = Member of Executive Committee
Teal = Member of Educational Content Advisory Board
*Lead Nurse Planner
** Members of Finance Committee (includes Past Treasurer and CPA)
\$\$ - Member of Investment Committee